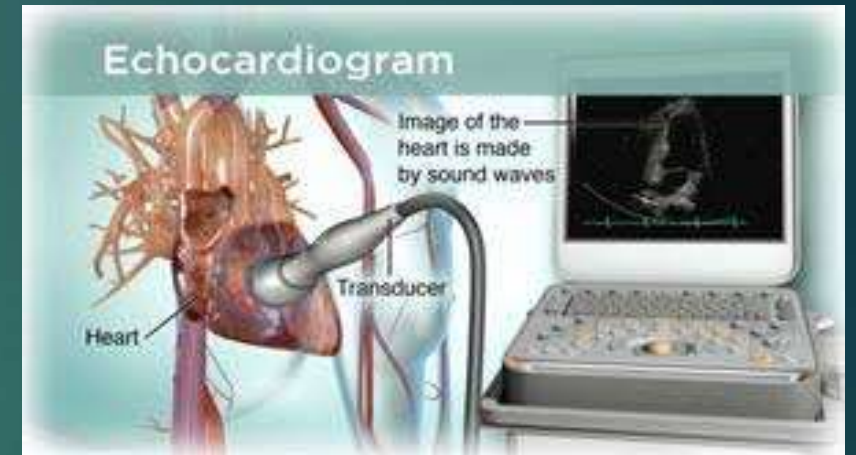


Cardiac Sonography

DIAGNOSTIC IMAGING EXAM OF THE HEART



Commonly known as Echo or Echocardiography

- ▶ [This video is an example of a basic echo scan exam](#) like the ones you will learn to perform.
- ▶ There is A LOT to learn to be able to do this and to understand what the images mean for the patient.
- ▶ Getting the RIGHT START makes a big difference!



What will I learn about in this program?

In class -

- ▶ All about the heart & how it works
- ▶ How many diseases affect the way the heart works
- ▶ How to recognize many congenital heart abnormalities
- ▶ What the professional standards are for sonographers
- ▶ How to prepare for national board exams to earn your credential
- ▶ How to apply & interview for your 1st job!



In scan labs -

- ▶ How to think in multiple dimensions
- ▶ How to use high tech equipment to take proper images/short videos of adult hearts
- ▶ How to recognize normal and abnormal findings
- ▶ How to perform measurements & calculations to evaluate your findings
- ▶ How to be part of the healthcare team!

What are clinicals?

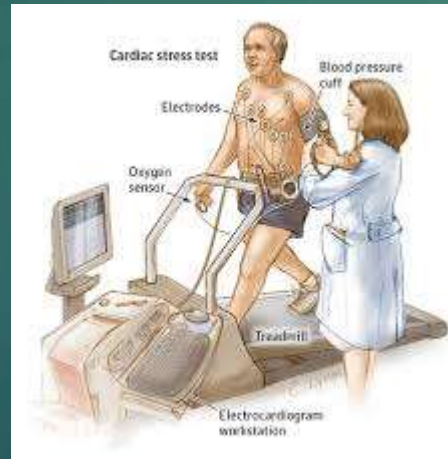
- ▶ Clinical education is where you use the knowledge & scan skills you've learned in school to practice on actual patients
- ▶ This is mostly in hospitals, but can also be in offices outside of a hospital
- ▶ You will attend clinicals at several different places to grow your skills, knowledge & confidence
- ▶ Most graduates are hired by one of their clinical sites



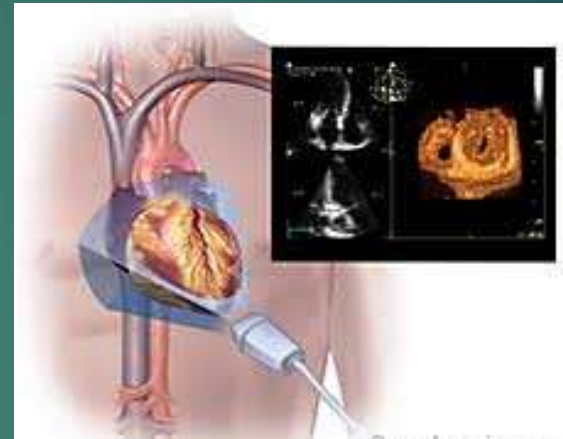
What types of scan exams does a Cardiac Sonographer do?



Routine or bedside echo



Stress Echo test



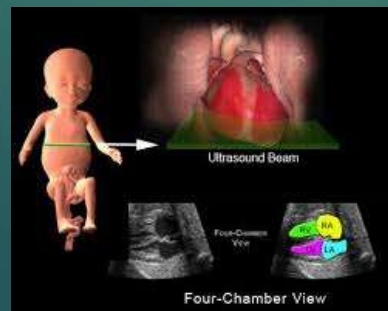
3D/4D echo exam



Assist with TEE echo
(transesophageal)

What kinds of jobs could I get?

- ▶ Staff sonographer
- ▶ Lead sonographer
- ▶ Echo department manager
- ▶ Doctor office staff
- ▶ Travelling temporary agency assignments
- ▶ Applications specialist for an ultrasound manufacturing company
- ▶ Crosstrain into pediatric or fetal echo, or into vascular sonography
- ▶ Educator!



What qualities do the best sonographers have?

- ▶ Dedication to learning
- ▶ Commitment to practicing
- ▶ Ability to accept evaluation & use it to improve
- ▶ Desire to provide the best and most compassionate care for ALL patients
- ▶ Love of lifelong learning
- ▶ Ability to work efficiently in a fast-paced environment
- ▶ Initiative
- ▶ Patience
- ▶ Persistence
- ▶ Sense of humor



What's your next move?

