

## How to Login to thePoint

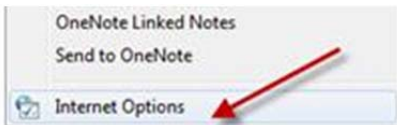
- 1) You must use Internet Explorer for thePoint. Open **Internet Explorer**.



- 2) Click on **Tools** on the top right.



- 3) Click on **Internet Options**.



- 4) Click on the **Security** tab.



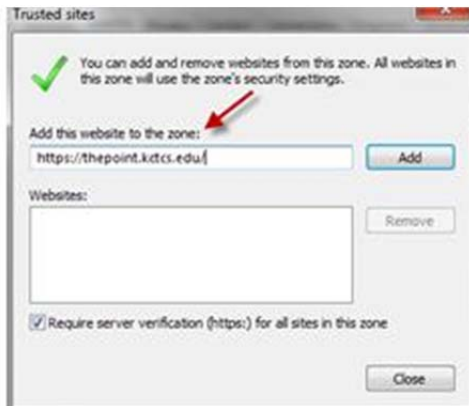
- 5) Click on **Trusted Sites**.



- 6) Click on **Sites**.



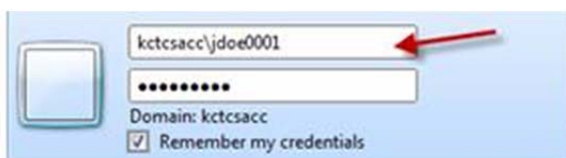
7) Type in <https://thepoint.kctcs.edu/> and then click **Add** and **Close**.



8) Click **OK** to apply the changes.



9) Type in **kctcsacc\username** and your **pa\$\$word**. Same username and pa\$\$word as your email.



10) You should now be logged in. Go ahead and bookmark this page for future access.

