

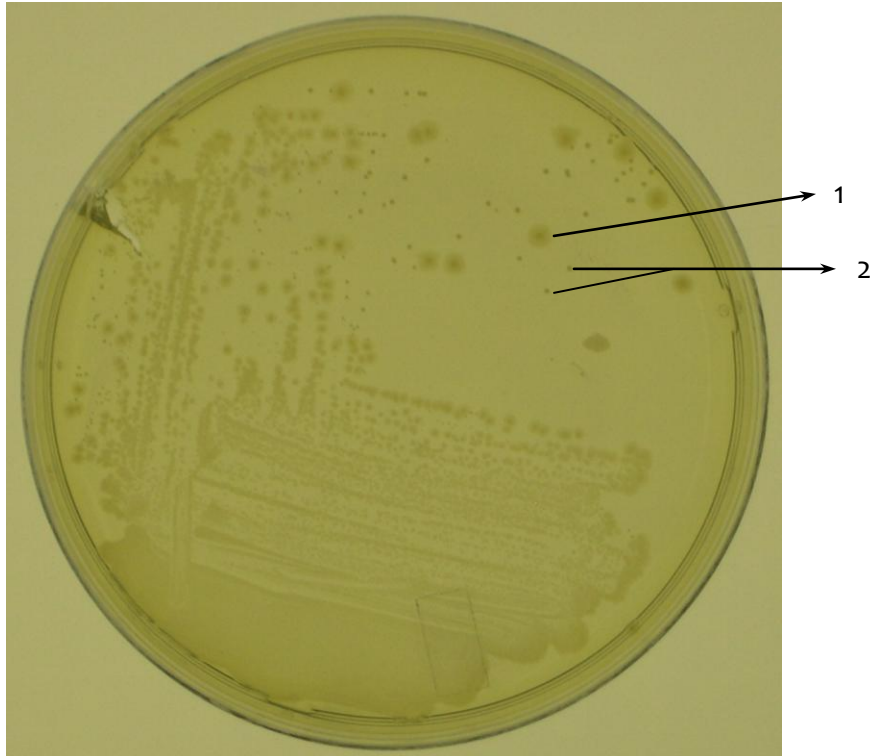
## Medium: Trypticase Soy Agar Plate (TSA)

- Primary Isolation Medium

☞ Sample: Urine

☞ Macroscopy: small individual colonies - two colony morphologies:

- 1) large, smooth, gray, moist shiny
- 2) small, pinpoint, round white



☞ Bacteria present:

- 1) *E. coli* - common cause of UTI
- 2) *S. epidermidis* – skin contaminant

Note: you cannot identify bacteria by just looking at the medium.