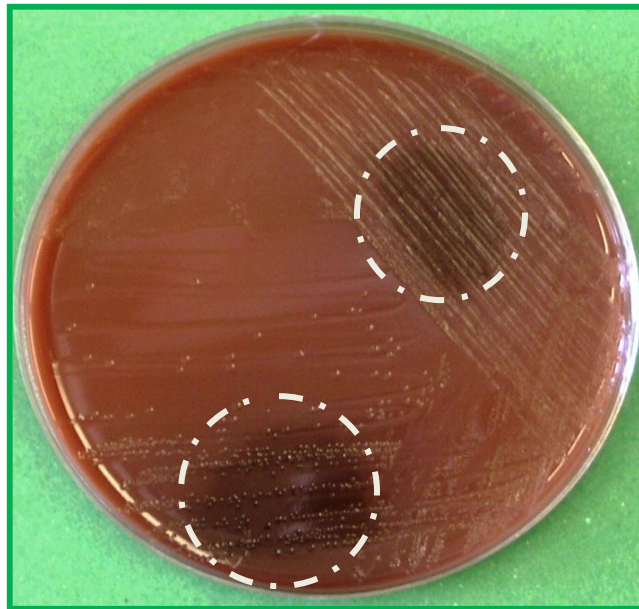


## Oxidase test

- ✓ useful in the *presumptive* identification of *Neisseria* species
- ✓ useful in discriminating between **oxidase negative** Enterobacteriaceae and **oxidase positive** Pseudomonadaceae
- ✓ a positive biochemical reaction involves the oxidation of **TMPD** (a chromogenic reducing agent added to colonies on a plate—see below) by bacterial cytochrome oxidase



### oxidase positive test

black regions encircled on **chocolate agar**  
streaked with *Neisseria gonorrhoeae*